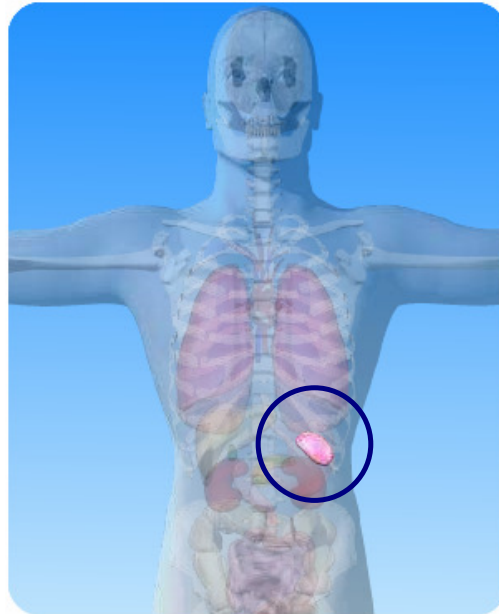


Body Builder



a) On the diagram of the abdominal cavity above, what is the name of the circled organ?

b) Unscramble the jumbled up words and use them to complete the sentences about the spleen:

- 1) The spleen is part of the system
- 2) blood cells are produced by the spleen.
- 3) The spleen is found in the
- 4) It is located just below the
- 5) Red cells are destroyed in the spleen.
- 6) Red blood cells usually last about 120
- 7) The spleen is about the size of a

phatlymic

teWhi

obmaned

sady

obold

sfit

phragmiad